

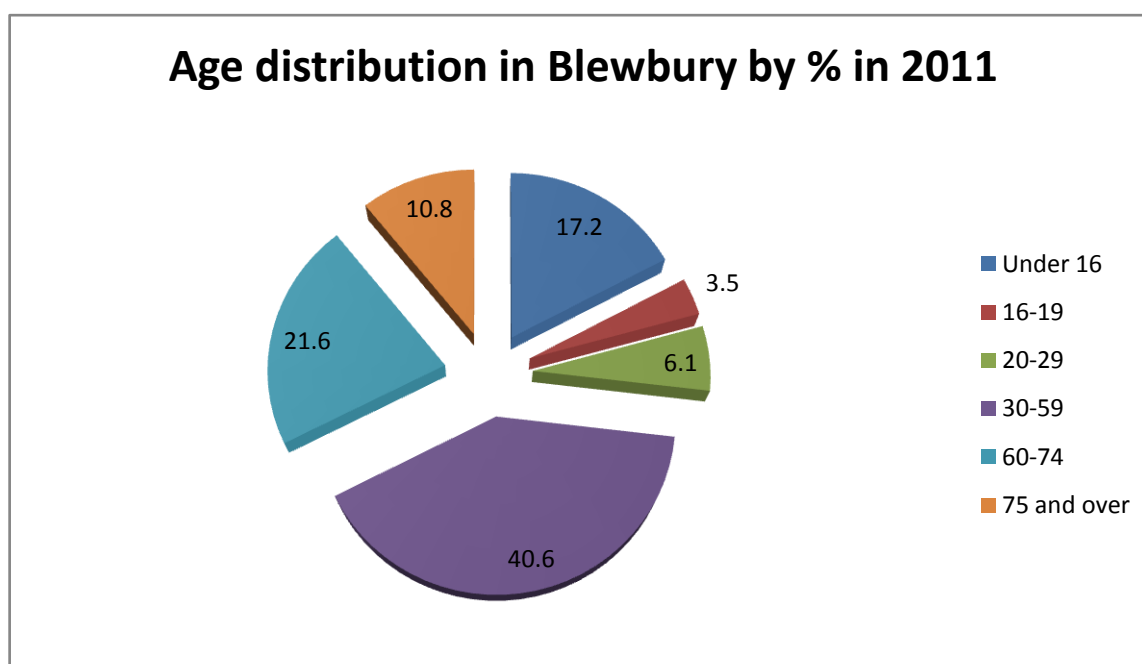
Results from the 2001 and 2011 Census Figures for Blewbury and Upton

Resident Population and Age

The resident population of Blewbury and Upton was measured as **1942 in 2001** and **2002 in 2011**. The split in population was **421 in Upton and 1581 in Blewbury**. In 2011 **47% were male and 53% female** in Blewbury but **51% male and 49% female** in Upton.

Resident population Age Distribution (percentage)

	2001 Blewbury and Upton	2011 Blewbury	2011 Upton
Under 16	17.2	17.2	20.4
16-19	3.9	3.5	3.1
20-29	8.2	6.1	6.2
30-59	42.1	40.6	42.5
60-74	19.5	21.6	19.0
75 and over	9.1	10.8	8.8
Average Age	43.3	45.2	43.9



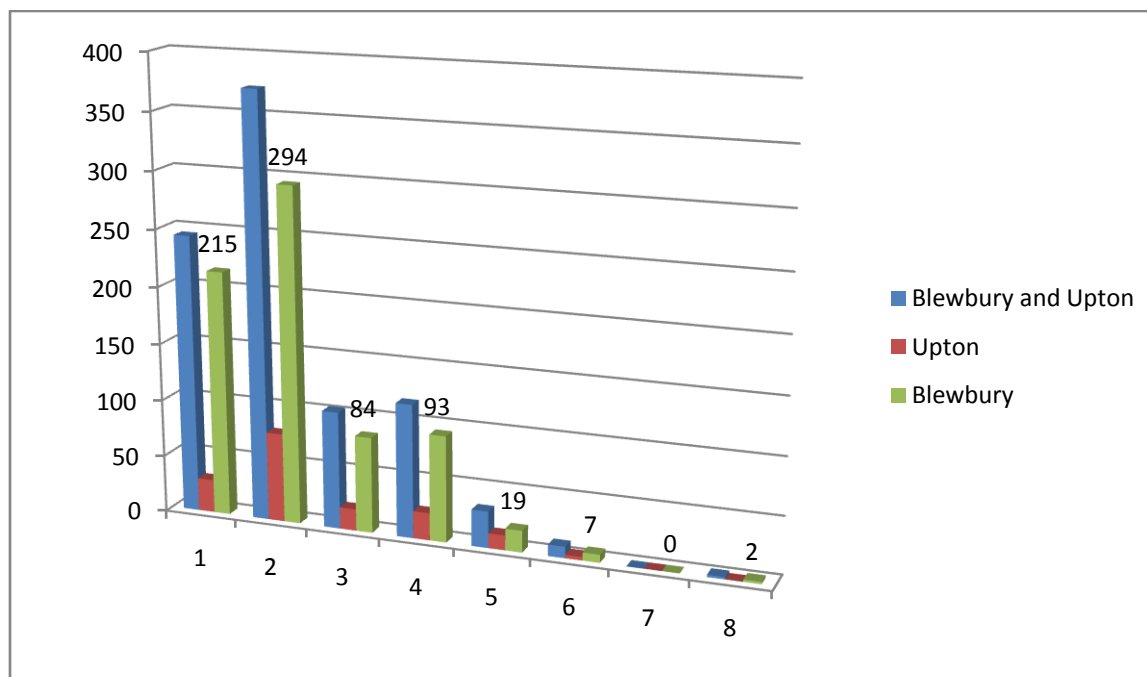
Households

In Blewbury and Upton there were **862 households in 2001** and this rose to **880 in 2011**. **166 were in Upton and 714 in Blewbury**

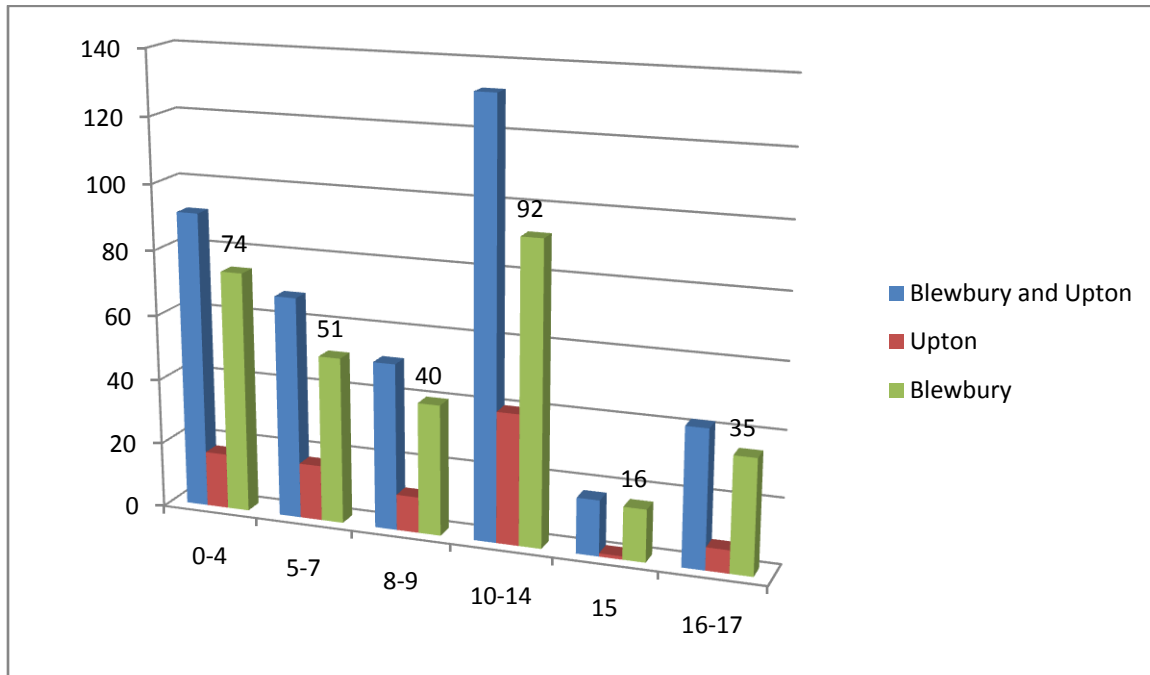
Number of Households in various categories (percentage)

	2001 Blewbury and Upton	2011 Blewbury	2011 Upton
One person households	29.1	30.1	17.4
Pensioners living alone	15.8	16.1	9.0
Other Pensioner households	14.5	19.7	22.2
Contained dependent children	23.4	24.2	27.7
Lone parent with dependent children	3.1	3.5	1.2

Household size 2011



Age Structure 2011 – Children under 18



Health

Resident Population (percentage)

	2001 Blewbury and Upton	2011 Blewbury	2011 Upton
With a limiting long term disability	14.8	14.9	14.2

NB This has a very vague definition

Source 2001/2011 Census, ONS

Economic Activity

Resident Population aged 16-74 (percentage)

	2001 Upton and Blewbury	2011 Blewbury	2011 Upton
Employed	65.6	69.7	72.1
Unemployed	1.6	2.1	2.1
Economically active students	1.5	0.7	1.2
Retired	19.1	17.7	14.9
Economically inactive students	2.4	3.1	2.6
Permanently sick or disabled	2.0	1.3	1.1
Other economically inactive	1.9	1.5	2.7